

PART OF THE S.E. 1/4 OF SEC. 29, T.7N., R.1W., S.L.B. & M.

53-1

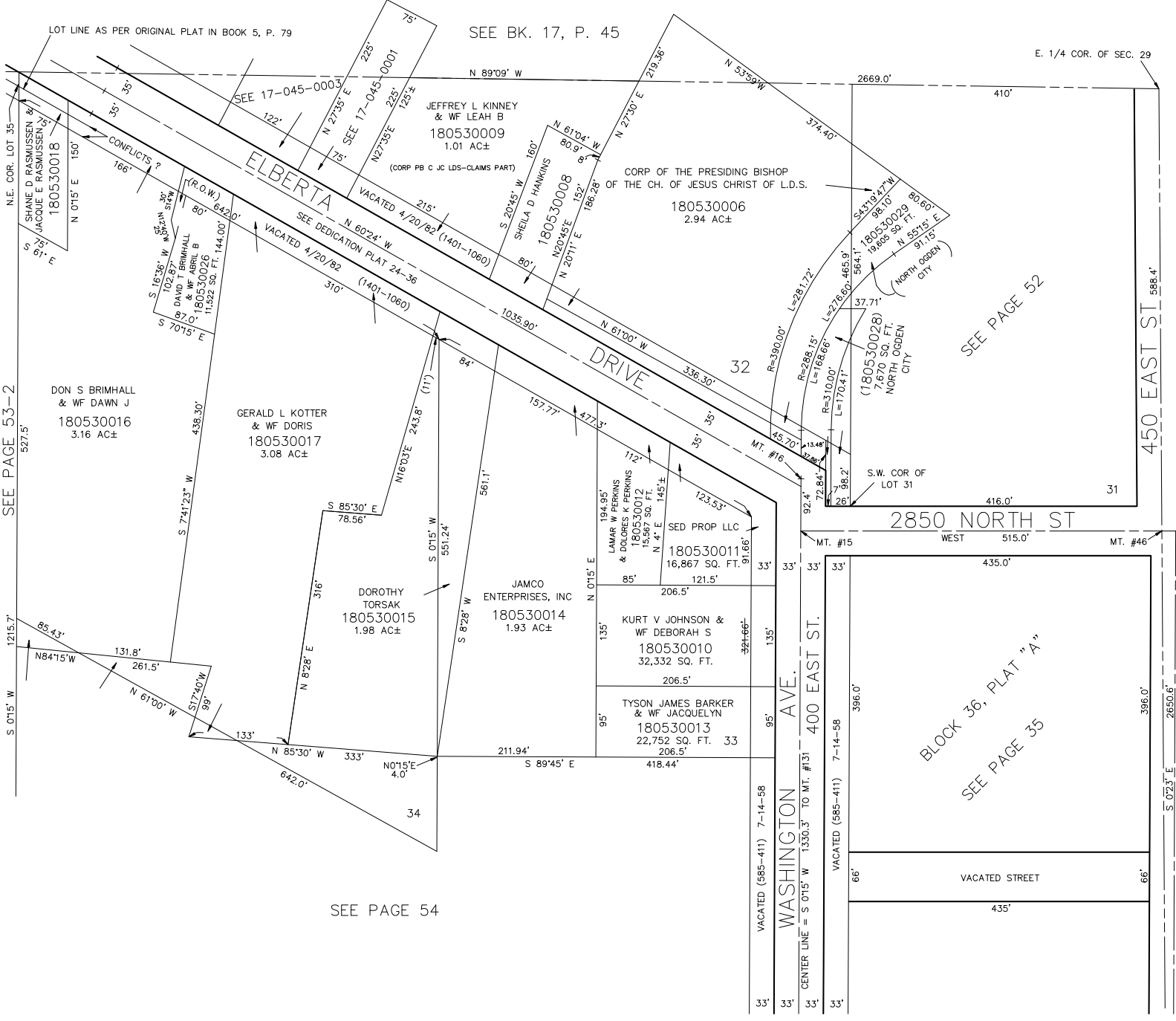
NORTH OGDEN

LOTS 32 TO 34, PLAT "B"

TAXING UNIT: 10

IN NORTH OGDEN CITY

SCALE 1" = 100'



SEE PAGE 53-2

SEE PAGE 52

SEE PAGE 54

BLOCK 36, PLAT "A"
SEE PAGE 35